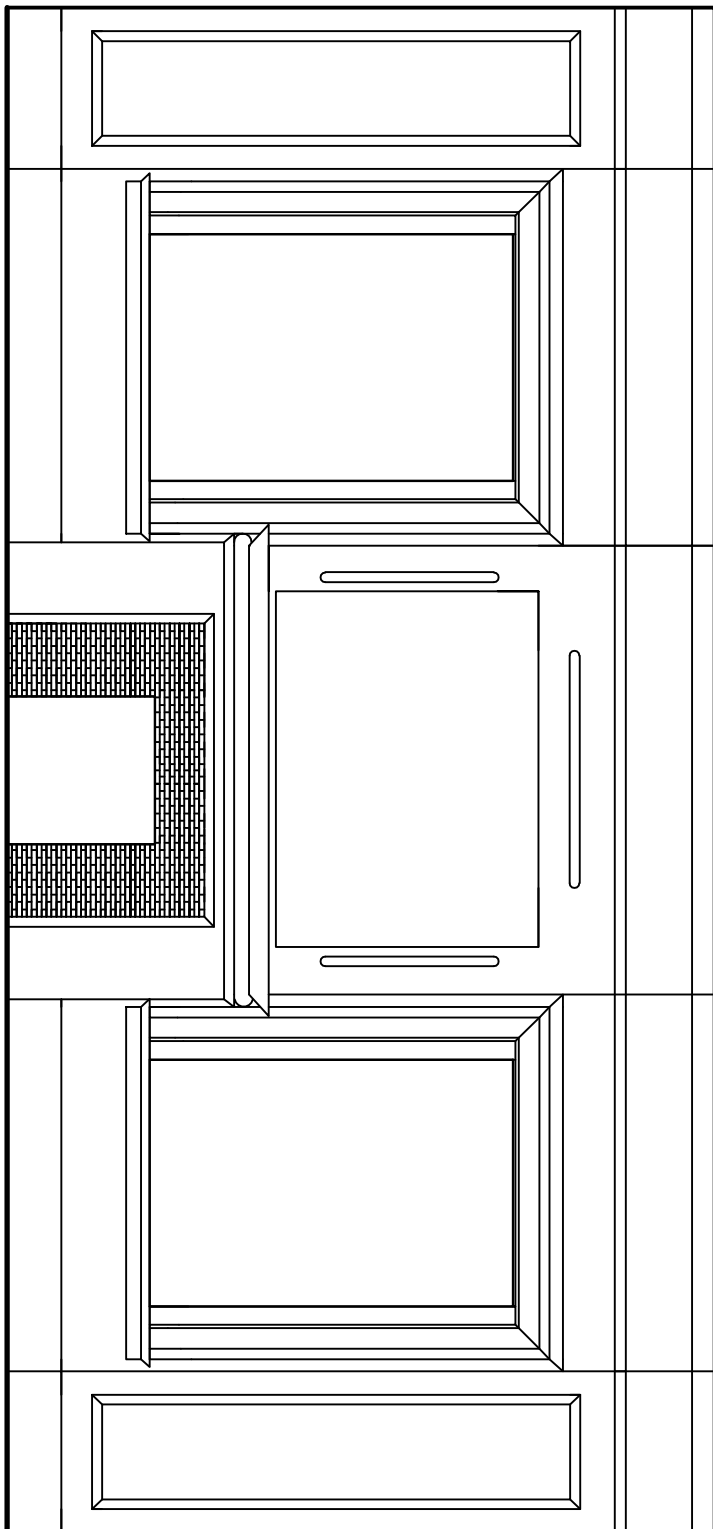


Rm 103 Living Room North Elevation
Scale: 1/8" = 1'-0"

25'-9 5/8"



8'-11 1/8"

ARCHITECT JEFFREY ROTHWELL 2009 IVY HALL RESTORATION 2005 - 2009 CUNNINGHAM COLLEGE OF ART AND DESIGN	PROJECT IVY HALL (THE PETERS MANSION) 170 PONCE DE LEON AVENUE, N.E. ATLANTA FULTON COUNTY GEORGIA	DATE 08/11/09	DRAWN BY JEFFREY ROTHWELL	CHECKED BY JEFFREY ROTHWELL
--	--	------------------	------------------------------	--------------------------------